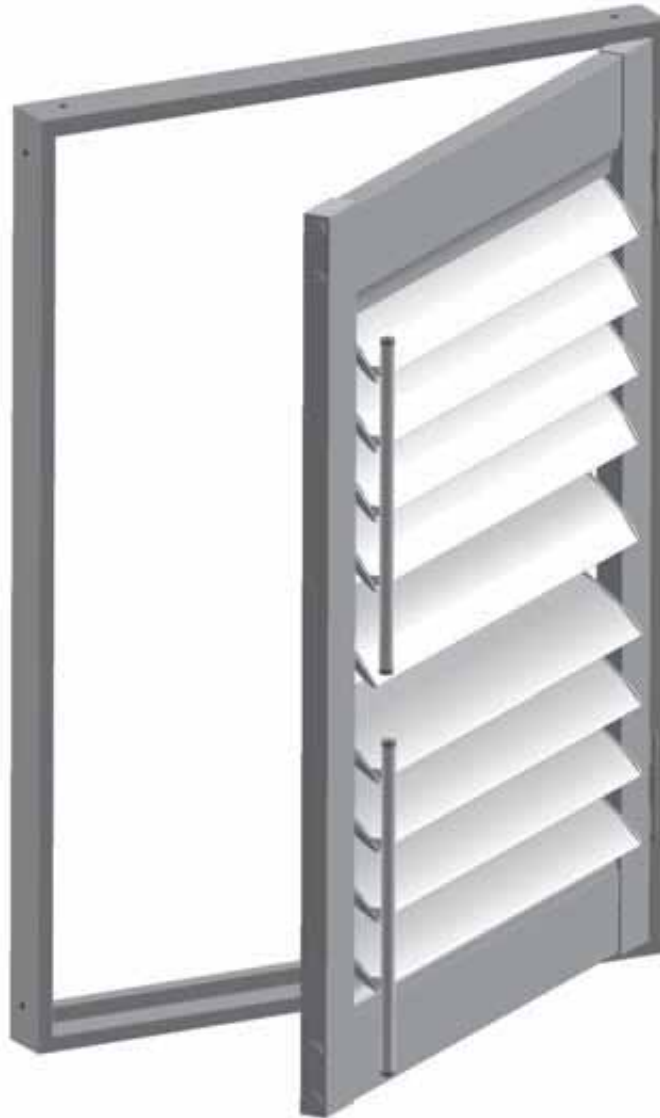


# Alumatek

## LOUVER OPTIONS



### LOUVER OPTIONS

62mm (2 1/2")

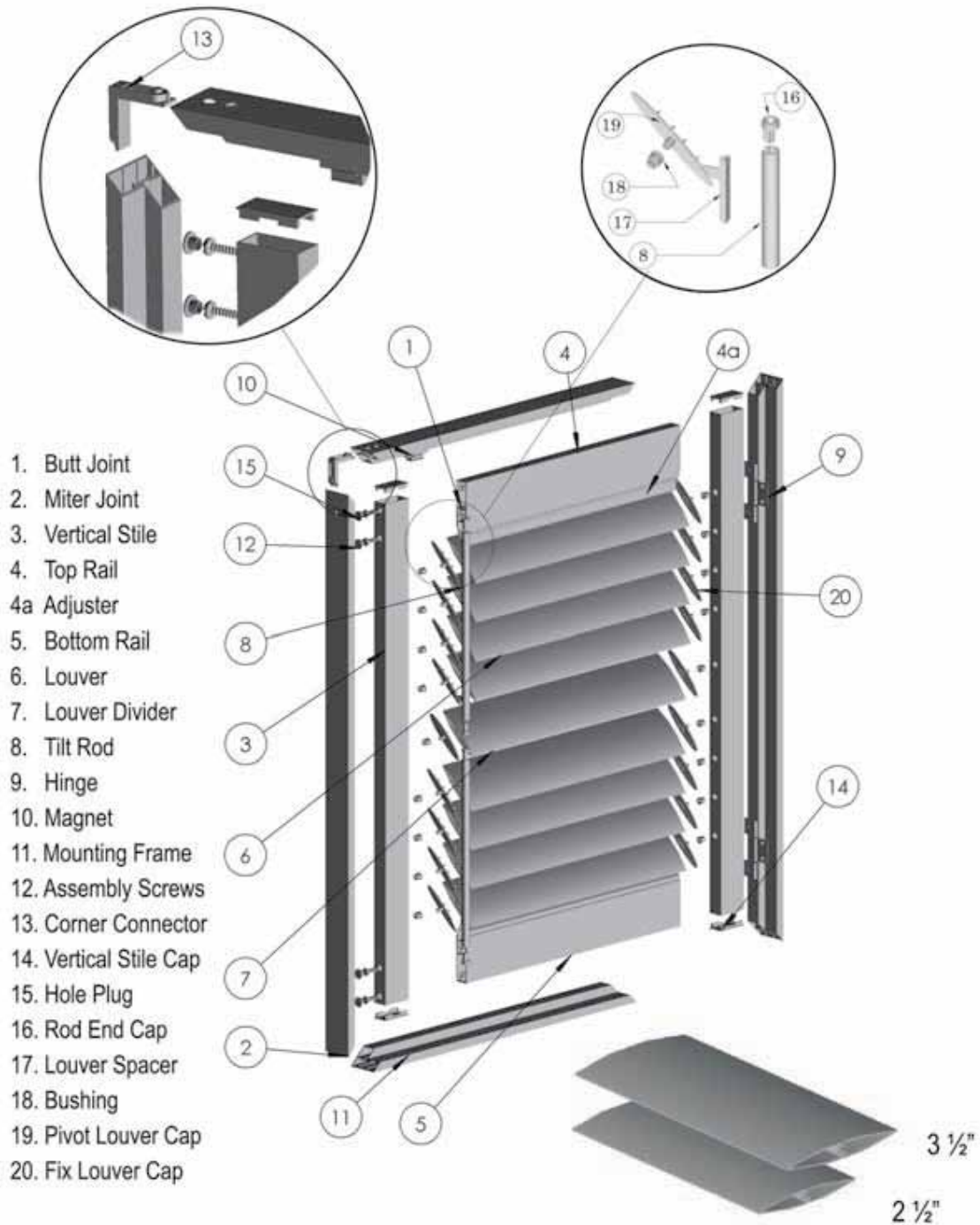
89mm (3 1/2")



# Alumatek

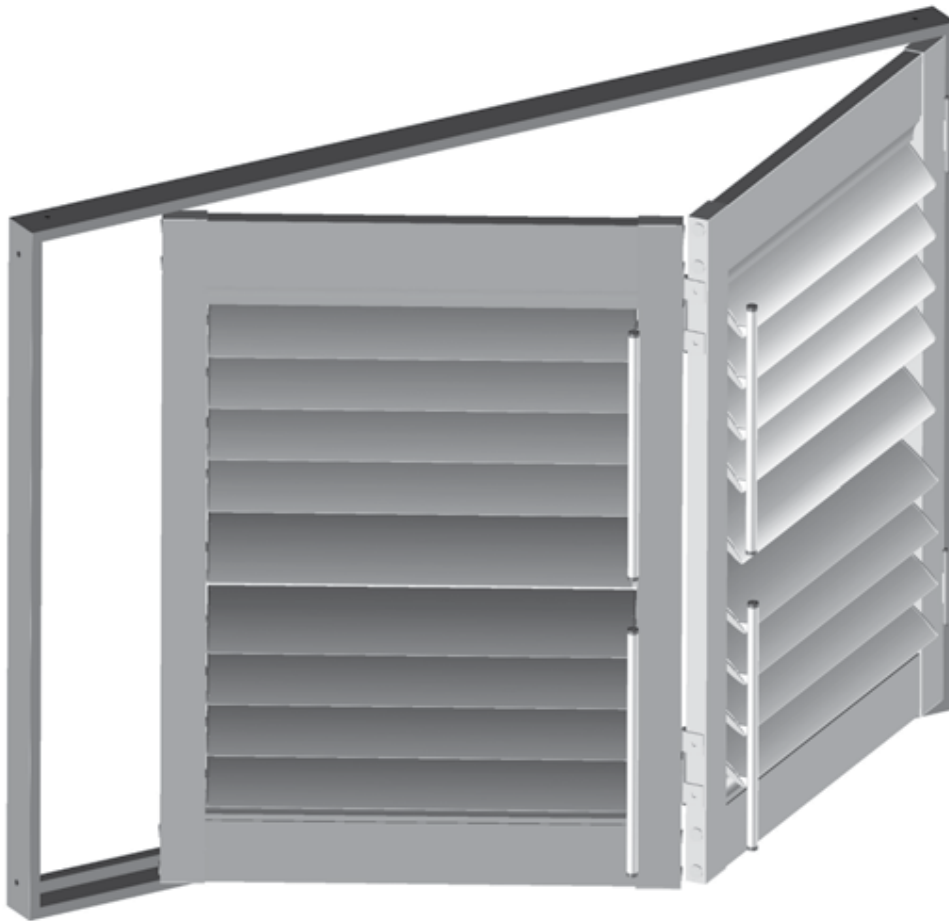
## PANEL SYSTEM

### Components



# Alumatek

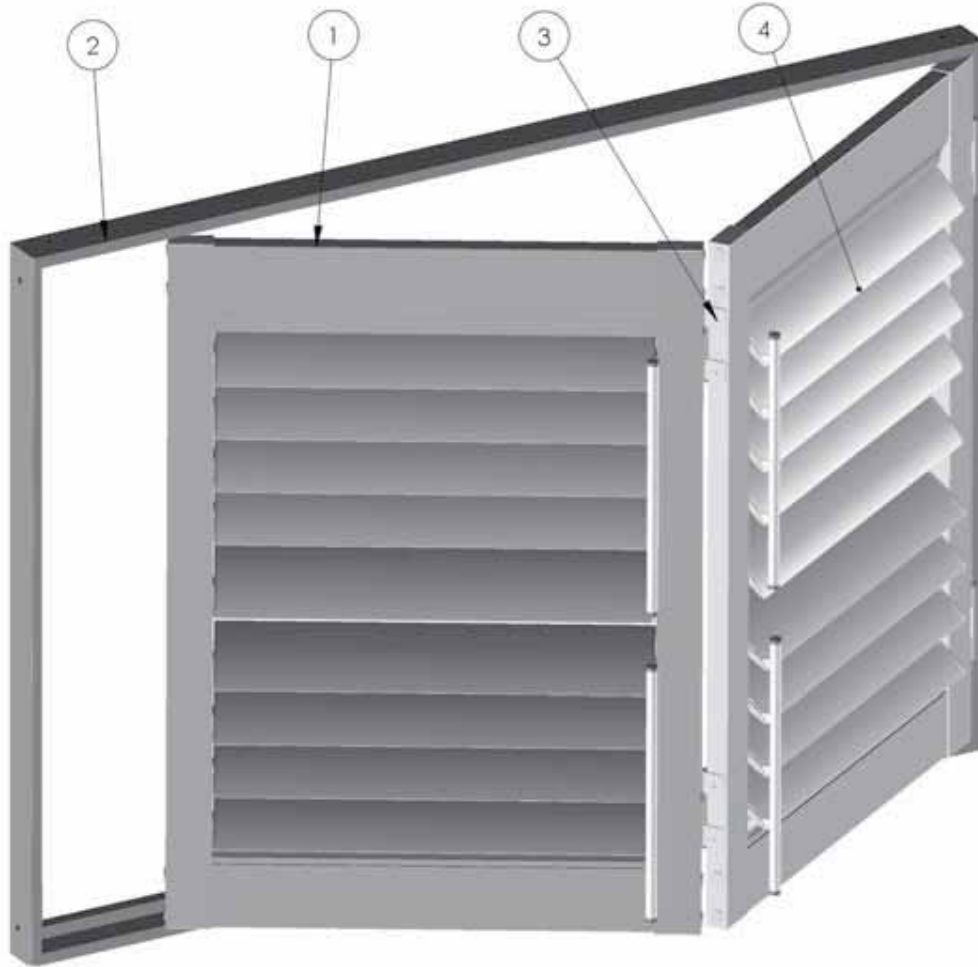
BI-FOLD SYSTEM



# Alumatek

## Bi-FOLD SYSTEM

### Components



- 1. Louver Panels
- 2. Mounting Frame
- 3. Hinges
- 4. Louvers



# Alumatek

SLIDING SYSTEM



# Alumatek

## SLIDING SYSTEM

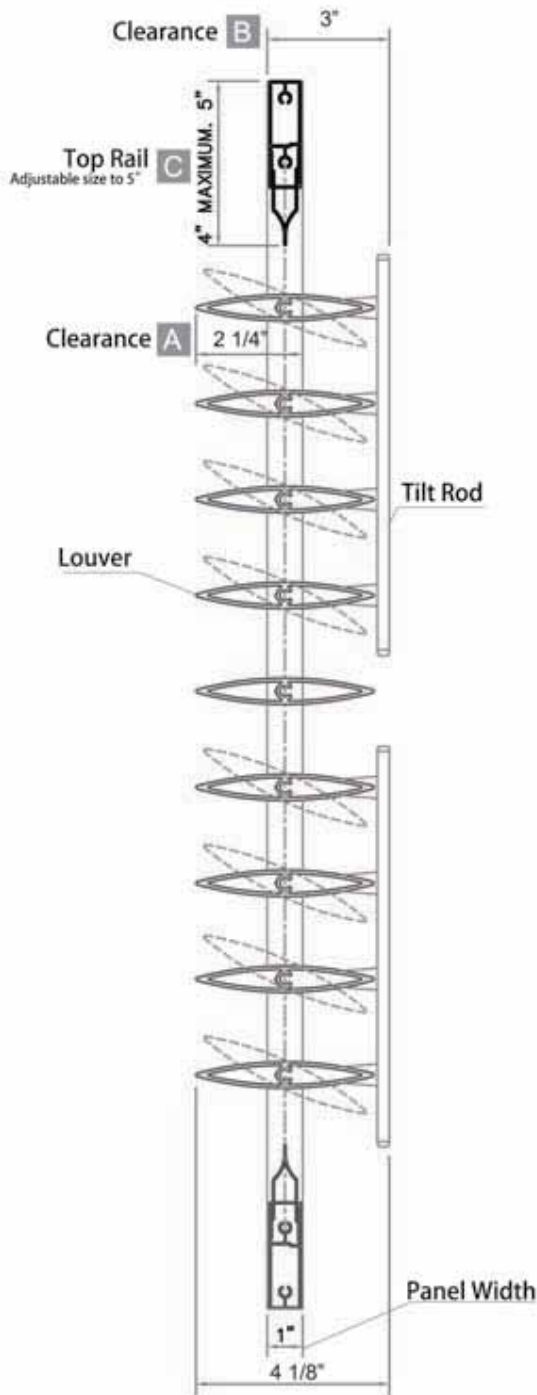
### Components



# Alumatek

## LOUVER SYSTEM

89mm (3.5") Louver Size Required Clearance



### LOUVERS OPEN

#### A

The required clearance when placing the tilt rod in the front is 57mm (2.25") . If this is not possible, an outside mount application using L-frame or Surface mount frame is recommended. If additional clearance is still needed, add the appropriate extension to the frame.

#### B

The required clearance when placing the tilt rod at the back is 76mm (3") . If this is not possible, follow the same procedure as in option A.

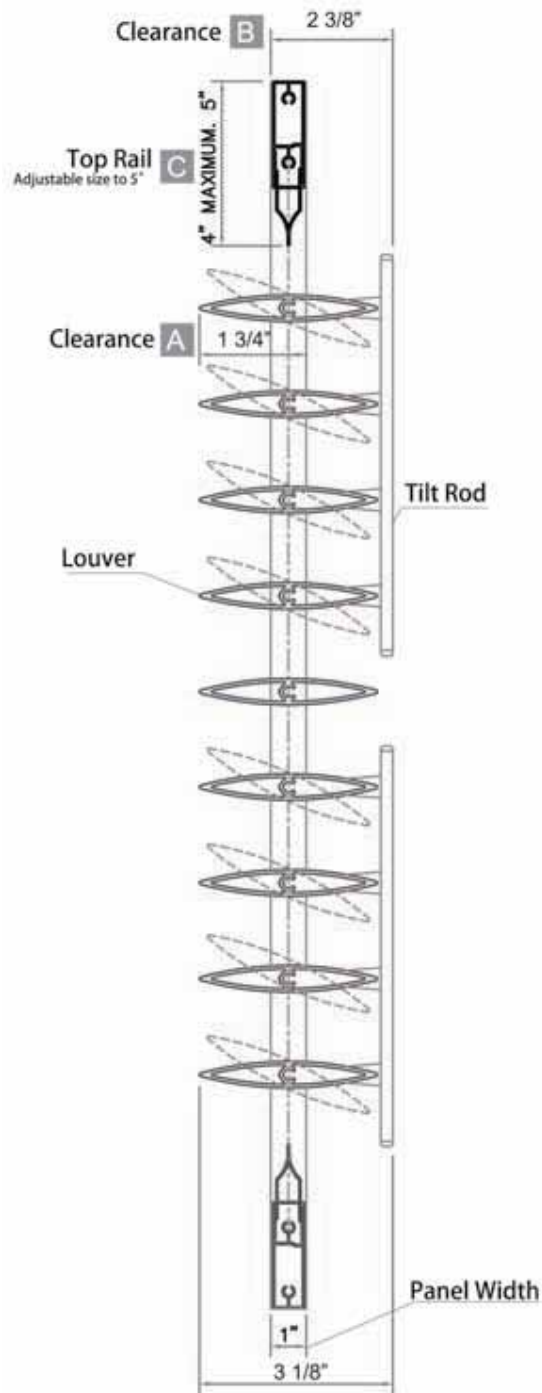
#### C

The louver centres are spaced evenly. The adjustment is altered at the top & bottom rail. The top & bottom rails will be the same. The minimum height is 102mm (4") , and the maximum height is 127mm (5") .

# Alumatek

## LOUVER SYSTEM

62mm (2.5") Louver Size Required Clearance



### LOUVERS OPEN

#### A

The required clearance when placing the tilt rod in the front is 45mm (1.75") . If this is not possible, an outside mount application using L-frame or Surface mount frame is recommended. If additional clearance is still needed, add the appropriate extension to the frame.

#### B

The required clearance when placing the tilt rod at the back is 60mm (2 3/8") . If this is not possible, follow the same procedure as in option A.

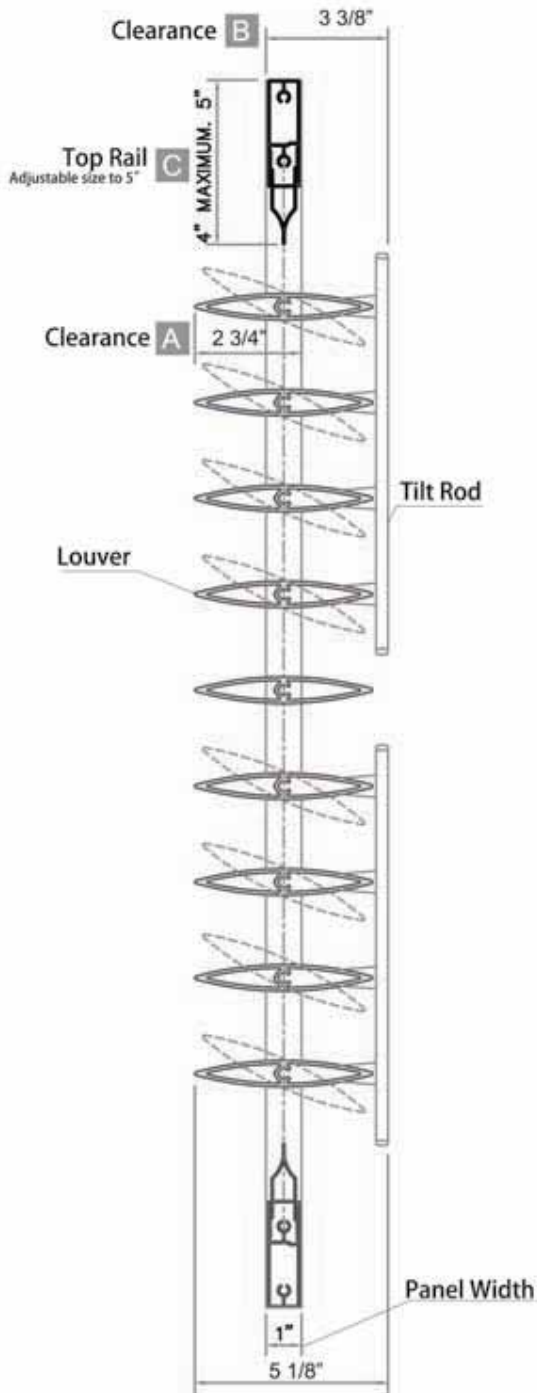
#### C

The louver centres are spaced evenly. The adjustment is altered at the top & bottom rail. The top & bottom rails will be the same. The minimum height is 102mm (4") , and the maximum height is 127mm (5") .

# Alumatek

## LOUVER SYSTEM

114mm (4.5") Louver Size Required Clearance



### LOUVERS OPEN

#### A

The required clearance when placing the tilt rod in the front is 70mm (2.75") . If this is not possible, an outside mount application using L-frame or Surface mount frame is recommended. If additional clearance is still needed, add the appropriate extension to the frame.

#### B

The required clearance when placing the tilt rod at the back is 86mm (3 3/8") . If this is not possible, follow the same procedure as in option A.

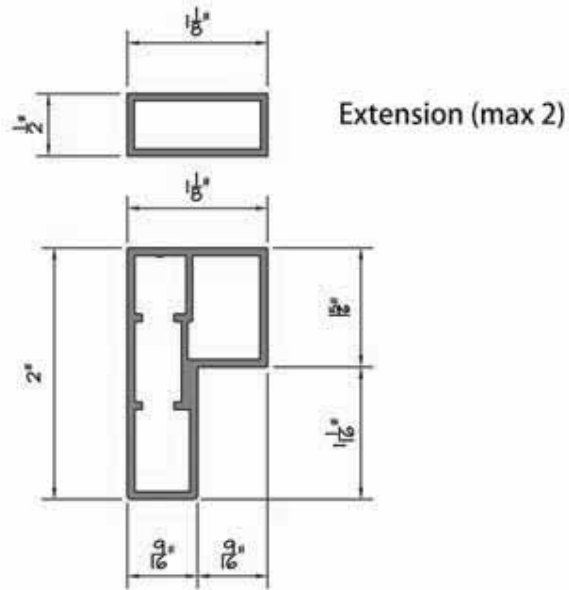
#### C

The louver centres are spaced evenly. The adjustment is altered at the top & bottom rail. The top & bottom rails will be the same. The minimum height is 102mm (4") , and the maximum height is 127mm (5") .

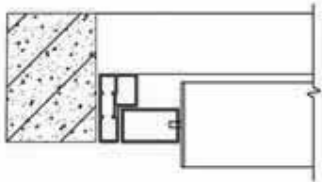
# Alumatek

## L-FRAME

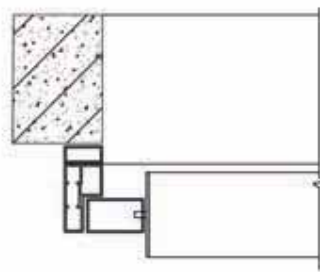
Panel and Bi-Fold Systems Only



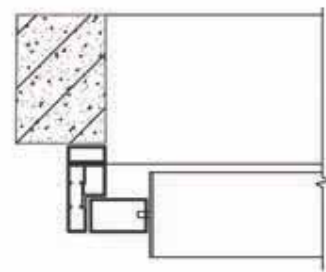
Inside Mount



Outside Mount



Outside Mount With Ext.

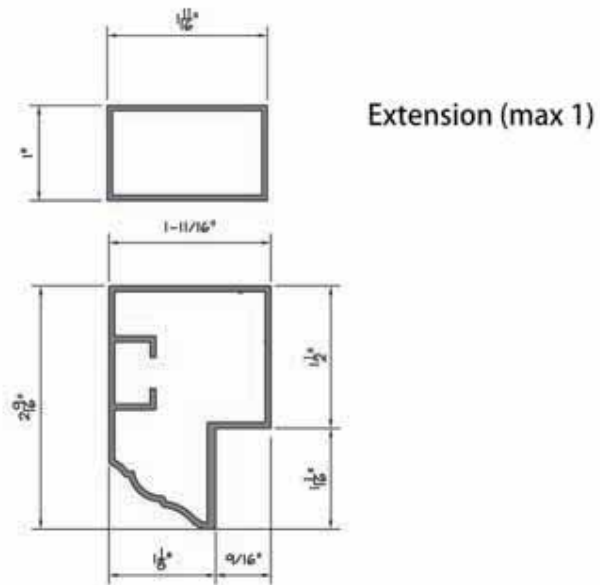


A versatile frame that can be used as an inside mount, outside mount, or outside mount with extension. Commonly used on top of window trim, on a french door, or outside a square opening. Two 0.5" extensions may be added for additional clearance when required. It is used with 2.5" and 3.5" louvers.

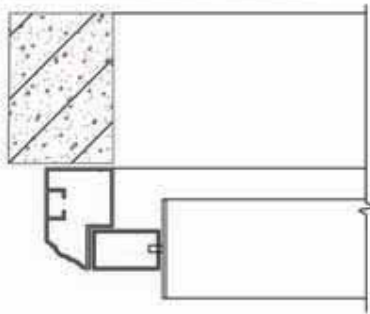
# Alumatek

## SURFACE MOUNT FRAME

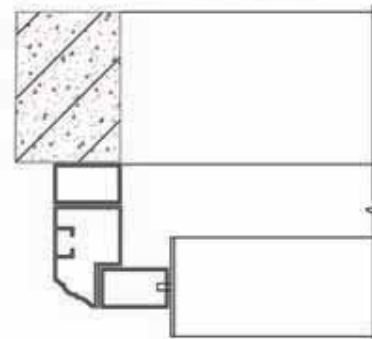
Panel and Bi-Fold Systems Only



Surface Mount



Surface Mount With Ext.

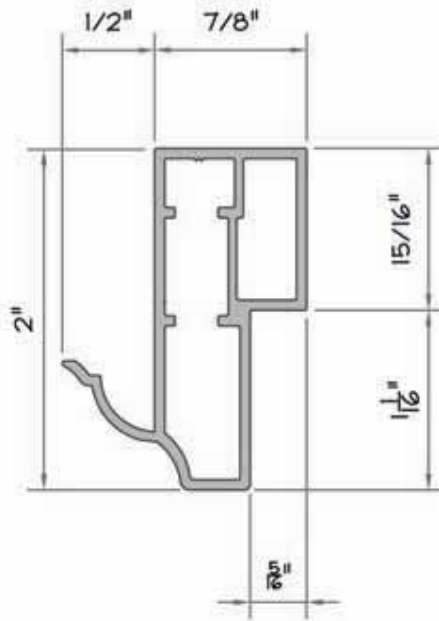


An outside mount frame that can be mounted around the window trim or on top of the window trim. Used with 3.5" louvers. 1" extension may be added for additional clearance when required.

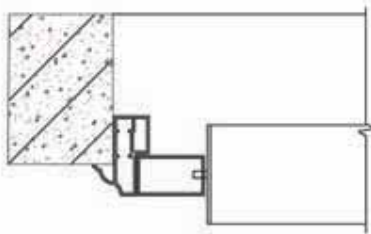
# Alumatek

## Z-FRAME

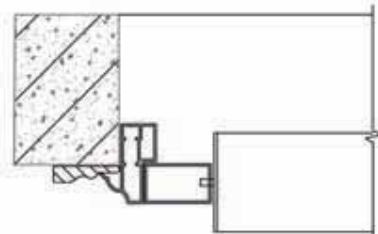
Panel and Bi-Fold Systems Only



**Inside Mount**



**Inside Mount With Ext.**

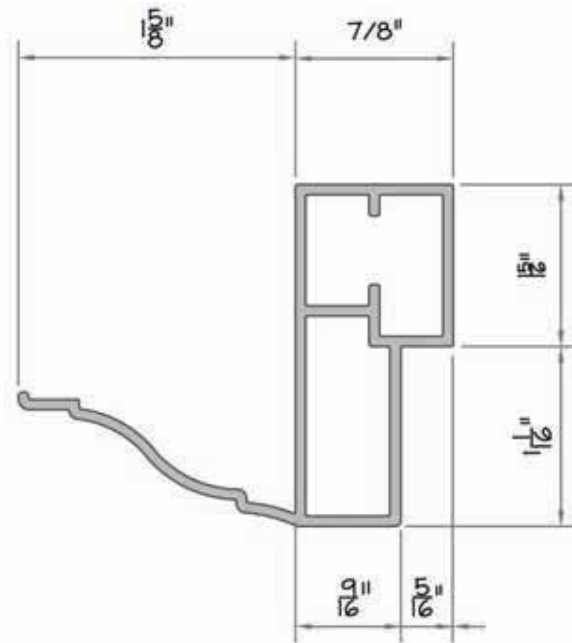


This frame is used inside mount applications only. It can be used when there is a drywall return or a wooden trim around the window. This frame can also be used when there is minimal jamb depth as with double hung windows. It can be used with all louver sizes provided there is enough clearance.

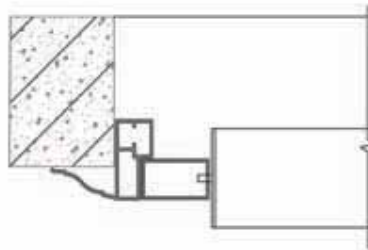
# Alumatek

## TRIM FRAME

Panel and Bi-Fold Systems Only



### Inside Mount

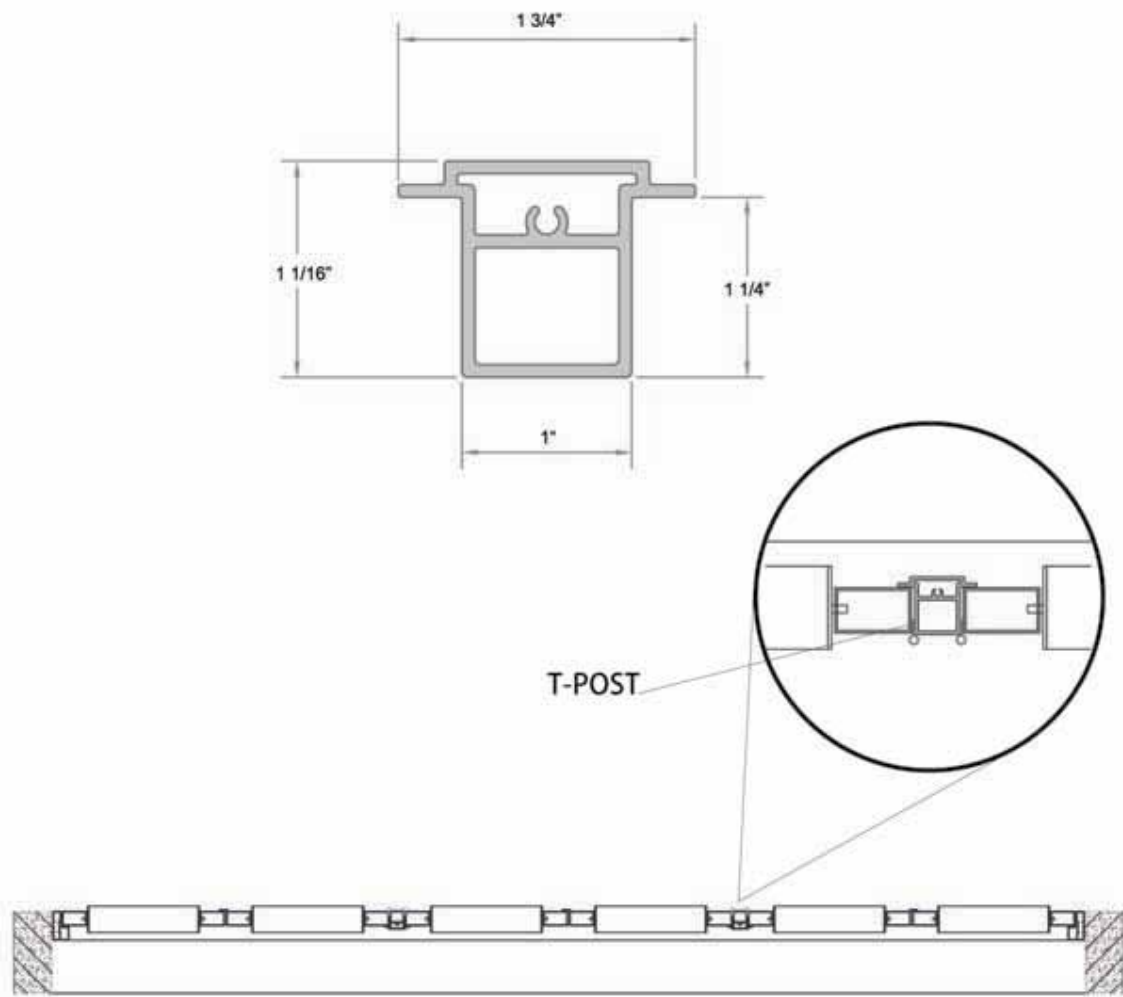


This frame is used as an inside mount frame for drywall applications with deep returns. It can be used with all louver sizes.

# Alumatek

## VERTICAL T-POST

Panel and Bi-Fold Systems Only



The T-Post is a versatile piece which is inserted vertically into the window opening. Inserting the T-Post sections off the total width and allows more panels to be used. The louver panel can be hinged directly to the T-Post on either side. This is most commonly used in wide openings. It can be used with all frames and even in unframed applications.

# Alumatek

## I-FRAME

Sliding Panel Systems Only



This frame is commonly used in various commercial applications such as sliding by-pass systems. It can be used as an inside or outside mount frame.