

MD 400

exterior louver system

SunProject™



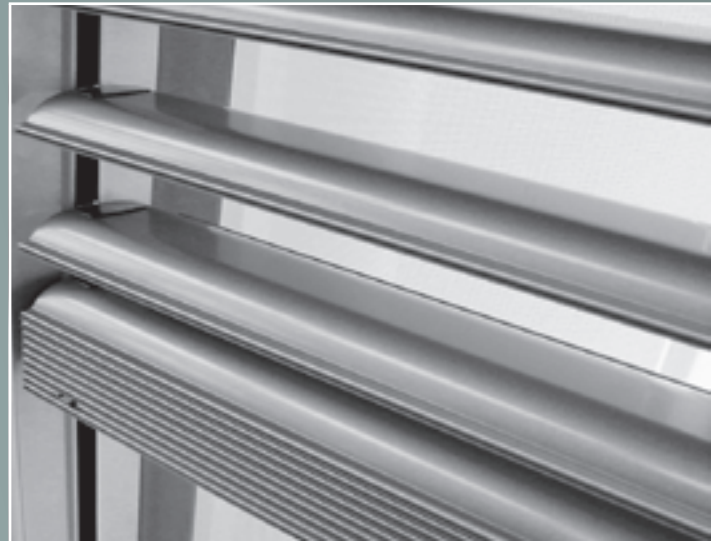
MD 400 exterior louver systems (ELS). A daylighting and sun control system.

Exterior louver system is made from rigid 92 mm (3.6 in.) wide aluminum roll formed or extruded louver slats, coated with a high resistant polyester powder coated paint.

The MD400 louver system is raised and lowered by a patented chain-belt system contained within the lateral guides. The louvers rotate in any position to optimize daylighting. A built in safety system prevents accidental overloading during lowering and raising of the louver slats. Advanced motorized systems that allow automatic lowering of the panels in the working position at 37°, stop and orientation of the louvers at any given height during raising or lowering process.

When fully lowered and closed the louvers automatically lock shut which prevents entry or raising from the exterior. The MD 400 can be automated by means of sun and wind sensor, or sun tracking system fully integrated with the building management system.

Slats stack tightly together



Slats are tensioned and adjust automatically to any position



Self adjusting system prevents jamming





The MD 400 louver system can be adapted to any application both commercial and residential. It is a durable external louver system with lateral guides. It provides the ideal solution to any opening where sun control, light control and day lighting is required. These operable external louver system can be positioned as required for total solar control and retracted when not required. The slats can be tilted for optimized shading based on the sun's angle. The MD 400 system can be integrated with building controls and sun tracking system.

The system is designed and engineered to withstand external weather conditions, the locking system can provide a security feature.

- Privacy protection when required
- High wind resistance capacity
- Safety standards according to EN13659
- The system functions in ice conditions
- Internal patented chain-belt tension system within side guide assures proper positioning of louvers and eliminates any jamming that may occur
- The view is not obstructed by cords or ladders
- Automatic closure, locks louvers shut in the lowered position to provide a form of security
- Slats are compact and stack tightly
- Optimization of lighting and shading as slats can tilt in any position based on the sun's angle
- Optimal shading solution in managing thermal gain and glare while providing natural daylight
- They can be retracted when shading is not required
- Wide selection of slat finishes to compliment any architectural detail
- Integration of intelligent controls makes the MD 400 an effective solution and contributes to the development of Dynamic Façade



CE certified



MD 400 exterior louver system



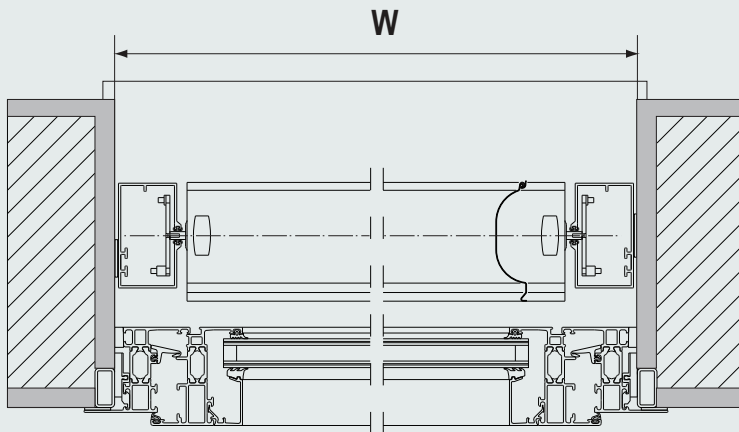
dimensions: minimum and maximum sizes

	Dimension	
	mm	in
Min. H	800	31
Max. H	4000	157
Min. W	600	24
Max. W	2800	110
Max. Area	6.5m ²	70ft ²

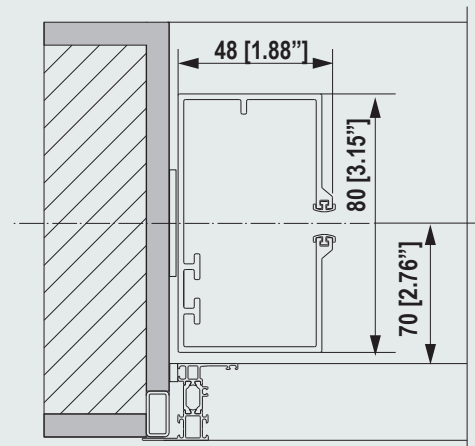
slat stacking height

Opening (Hop)		Stacking (Hst)		Total Product Height (H)	
mm	in	mm	in		
1000	39	230	9	1230	48
1250	49	230	9	1480	58
1500	59	230	9	1730	68
1750	69	240	9	1990	78
2000	79	255	10	2255	89
2250	89	270	11	2520	99
2500	98	290	11	2790	110
2750	108	305	12	3055	120
3000	118	320	13	3320	131
3250	128	340	13	3590	141
3500	138	355	14	3855	152
3750	148	370	15	4120	162
4000	157	390	15	4390	173
4250	167	405	16	4655	183

Slats are tensioned and adjust automatically.



CHANNEL DETAIL



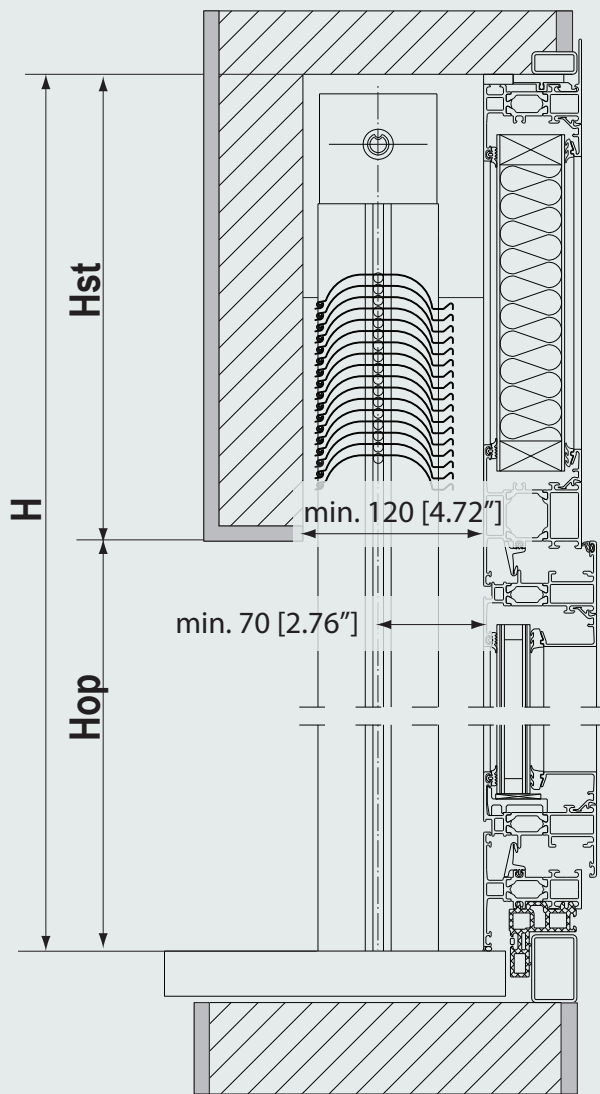
MD 400 exterior louver system

technical card

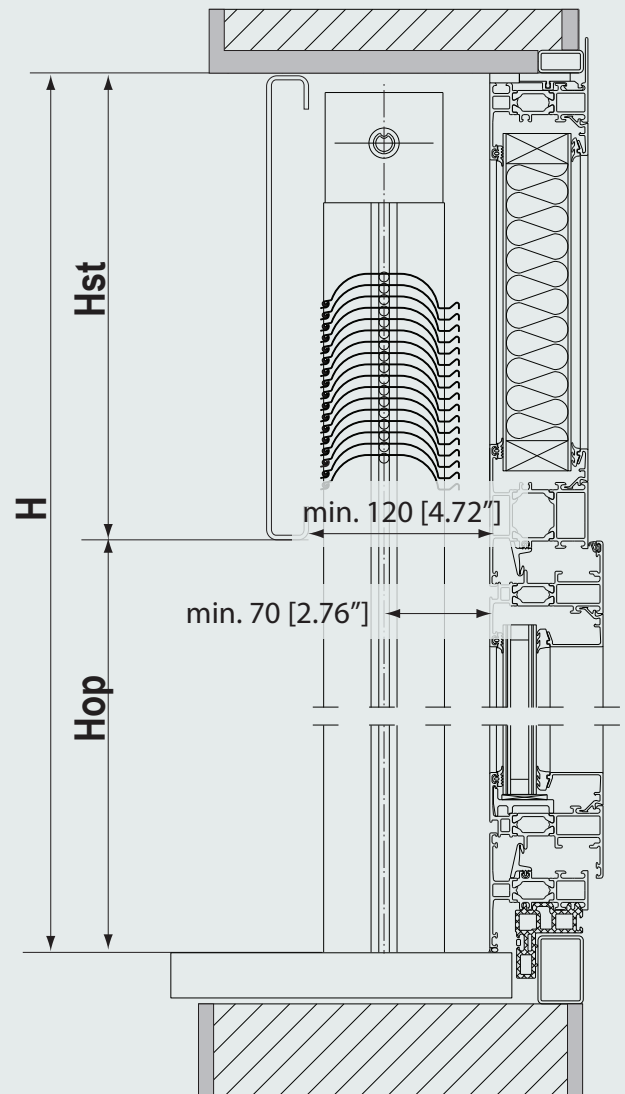
legend

H	Total Height
W	Total Width of Opening
Hop	Height of Window Opening
Hst	Height of Stacking

RECESSED MOUNT



SURFACE MOUNT



205 Adesso Drive
Concord, ON, L4K 3C4

905.660.3117
905.660.3365
888.836.6980
800.728.8636

21331 Gordon Way, Suite 1160
Richmond, BC, V6W 1J9

604.980.9899
604.980.4707
888.980.9899
866.980.4707

888.836.6980
Contact: sales@sunproject.com
www.sunproject.com

SunProject™